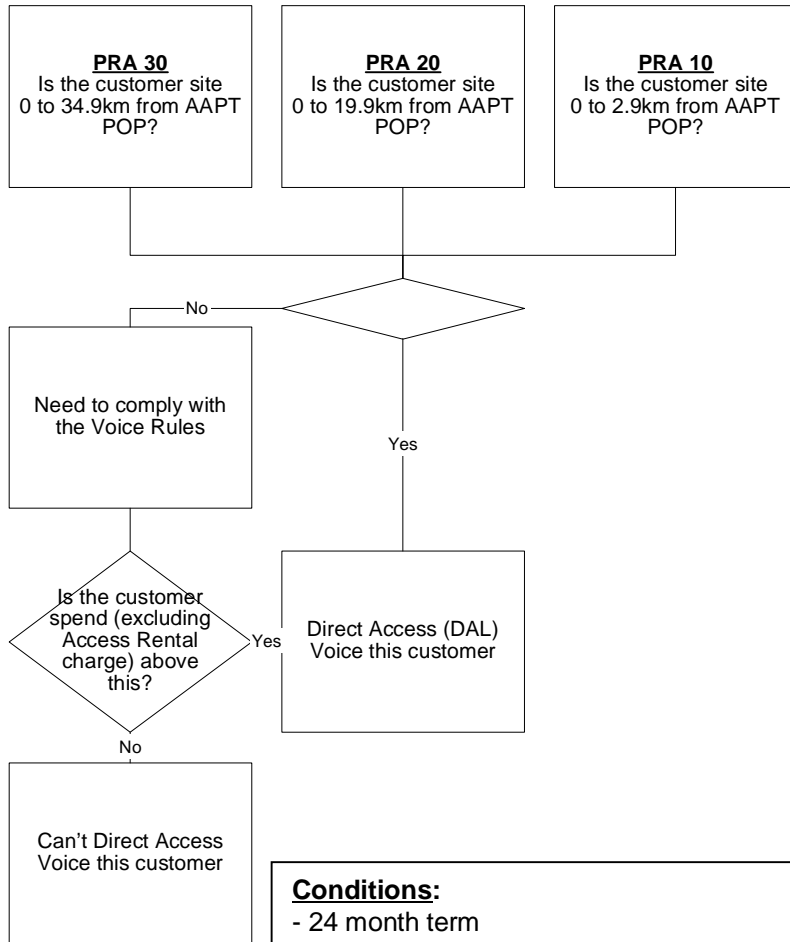


Direct Access Voice (DAL) Cheat Sheet



km	Spend Required Threshold		
	PRA 30	PRA 20	PRA 10
0	-	-	-
1	-	-	-
2	-	-	-
3	-	-	\$925
4	-	-	\$925
5	-	-	\$1,044
6	-	-	\$1,044
7	-	-	\$1,439
8	-	-	\$1,439
9	-	-	\$1,636
10	-	-	\$1,636
11	-	-	\$1,834
12	-	-	\$1,834
13	-	-	\$1,834
14	-	-	\$1,834
15-19	-	-	\$2,624
20 – 24	-	\$1,814	\$3,019
25 – 29	-	\$2,209	\$3,414
30 – 34	-	\$2,604	\$3,809
35 – 39	\$2,407	\$2,999	\$4,204
40 – 44	\$2,802	\$3,395	\$4,599
45 – 49	\$3,395	\$3,987	\$5,192
50 – 59	\$3,790	\$4,382	\$5,587

FAQs:

- Q: How do I check distances?
A: Your Comms Consultant can give you an accurate distance or for a rough guide use something like www.whereis.com.au
- Q: Where are the AAPT POPs?
A: **NSW:** Haymarket, Glebe, Kent St, Chatswood, Parramatta, Newtown, North Sydney.
ACT: CBD, Deakin, Civic.
Vic: CBD, Richmond, Exhibition, Dandenong, Geelong, Box Hill, Windsor.
Qld: CBD, Fortitude Valley, Woolloongabba, GoldCoast(Southport), GoldCoast(Surfers).
SA: CBD, Flinders.
WA: CBD, Waymouth, Pier, Wellington.
- Q: Do we still need to do project summaries?
A: Yes we are not changing the existing processes.
- Q: What if Telstra charges porting away charges?
A: Customer can provide us with a copy of the invoice and we will credit these.
- Q: How do I know what type of access technology use?
A: Your Comms Consultants needs to select this based on access rules.

Conditions:

- 24 month term
- Standard monthly access charges for PRA10/20/30 of \$250/\$495/ \$595 (excl GST)
- Connection charge for PRA10 of \$1500, PRA20/30 \$0 this includes porting and installs
- All pricing variations need to be approved by Pricing Manager via SPA
- Rules valid for both Retention and Acquisition Teams
- CBD and Metro bands only (not Regional)